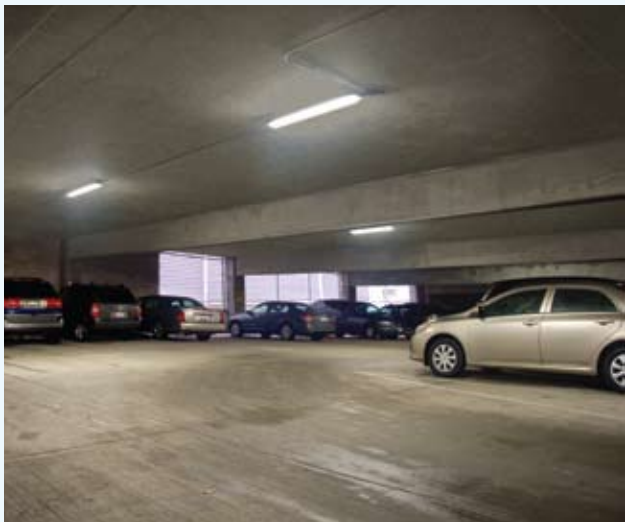




PGF SERIES Fluorescent Parking Garage Fixture

Now Available
in 3-Lamp, High
Intensity Luminaire

The PGF Series delivers optimum performance while using significantly less energy as compared to traditional fluorescent and metal halide fixtures. Our specially designed 2-lamp and 3-lamp optical systems optimize light output and distribution to ensure uniform illumination with fewer fixtures throughout your parking garage. These features combined with energy-efficient T5 & T8 lamps, labor saving pre-wired whips and vandal resistant heavy duty brackets, mean significant savings for new construction as well as for retrofitting fluorescent and metal halide systems.



Reduced Energy Usage

- Utilizes 40% - 50% less energy than traditional metal halide fixtures



U.S. Patent 7883236

2 Lamp



3 Lamp

Optional stainless steel latches shown



PGF Series – Built to Last

- Vaportight design
- Durable, high impact resistant housing and lens
- Featuring special breather design in the housing to prevent internal pressures and vacuums to ensure long-life seal and component integrity
- Fire retardant, non-toxic gasket for continuous seal between housing and lens
- Flexible mounting – featuring optional heavy duty mounting bracket for extra stability
- Tool-less entry for relamping



Optional Heavy-Duty Mounting Bracket



IP65

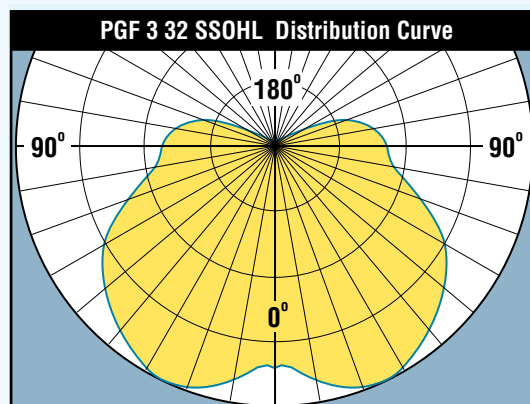
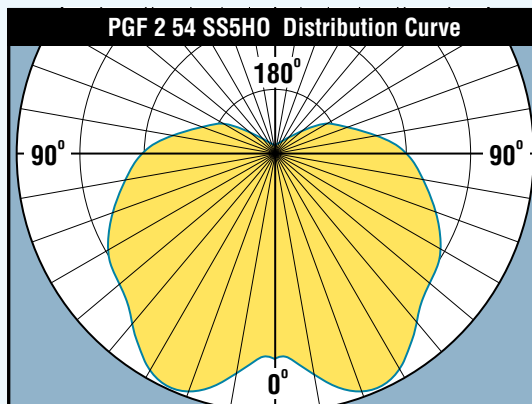
Optional Features

- Occupancy sensing for extra energy savings
- Pre-wired whips reduce installation costs
- Emergency pack
- Stainless steel latches



Pre-Wired Whip

Packed with Performance



3-lamp unit delivers higher light levels to targeted area without increased housing size

- Designed to meet or exceed IESNA RP-20-98 at specified spacings and mounting heights
- Uniform distribution – maximum control, performance and fixture spacing
- 300 sq. ft. greater coverage than current industry standards
- 14% uplight – eliminates ‘cave effect’
- Color Rendering Index (CRI) at 85 (with appropriate lamp and ballast combination)

Contact your local rep today for more information!



LSI OUTDOOR LIGHTING

10000 Alliance Road ♦ Cincinnati, Ohio 45242

(513)793-3200 FAX (513)984-1335 ♦ www.lsi-industries.com