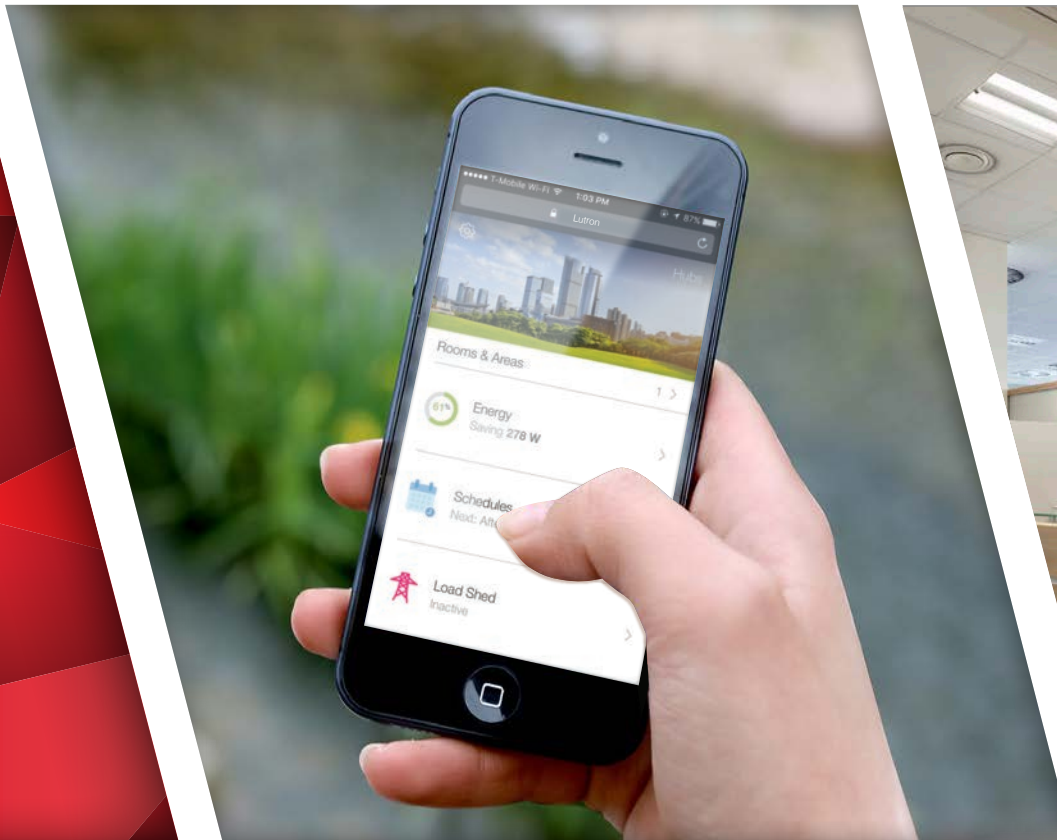


**AirLink**<sup>TM</sup>  
enabled by Lutron®

Advanced Wireless Lighting Control System



the image company

# AirLink™

enabled by Lutron®



simple to specify | simple to install | simple to use



## Simple to specify

The flexibility you need to design your building

- + **Design your system with a full range of product offerings**  
specify a simple sensor solution or a fully integrated lighting management system
- + **Combine individual fixture control & area control**  
AirLink wireless solutions allows for limitless flexibility & customization
- + **Easily match controls to the fixture package**  
on/off switching, 0–10V, phase control, EcoSystem® or any combination
- + **Expand the system at any time**  
add control options, add new areas, easily upgrade software to add new features

## Simple to install

Wireless simplifies installation & reduces callbacks

- + **Less wiring makes installation faster**  
up to 90% labor & risk reduction for a total project
- + **Setup is as simple as pushing a button or using your smart device**  
no manufacturer commissioning required on most jobs, further reducing time & labor cost
- + **Start small & expand at any time**  
with no new wiring, meet budget requirements & future space changing needs
- + **Eliminate callbacks**  
AirLink's proven reliability helps stay within budget & reduces time spent on the job

## Simple to use

Maximize productivity & building performance

- + **Monitor, adjust & manage your system from any smart device**  
easily adjust the lighting control to accommodate building churn, improve occupancy comfort & save up to 60% lighting energy
- + **Expand capability**  
add new controls or upgrade software at any time without replacing the existing system
- + **Simple integration**  
using BACnet protocol, connect with other building systems at the time of initial installation or whenever you expand the system

# Energy-saving Control Capabilities

## Control Options



**Occupancy/vacancy sensing** turns lights on when occupants are in a space & off when they vacate the space

## Potential Savings

**20 – 60%**  
Lighting



**Daylight harvesting** dims the light-level when daylight is available to light the space

**25 – 60%**  
Lighting



**Scheduling** provides pre-programmed changes in light levels based on time of day

**10 – 20%**  
Lighting



**Demand response** automatically reduces lighting loads during peak electricity usage times

**30 – 50%**  
Peak Period



**Plug load control** automatically turns off loads after occupants leave a space

**15 – 50%**  
Controlled Load



**High-end trim** sets the maximum light level based on customer requirements in each space

**10 – 30%**  
Lighting



**Personal dimming control** gives occupants the ability to adjust the light output to their comfort level

**10 – 20%**  
Lighting



**HVAC integration** controls heating, ventilation & air conditioning systems through contact closure or BACnet protocol

**5 – 15%**  
HVAC



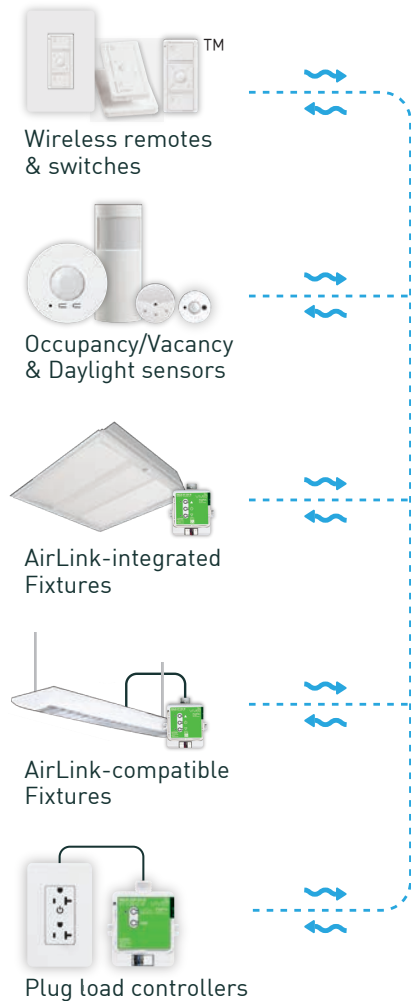
**Energy Monitoring** within the web app identifies energy usage information to drive decision making & demonstrate savings

**Variable**

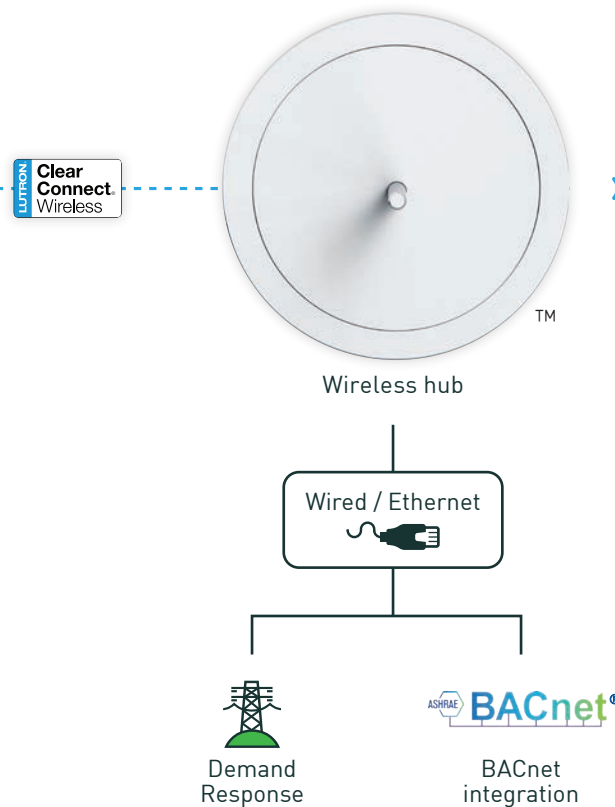


# The AirLink System enabled by Lutron®

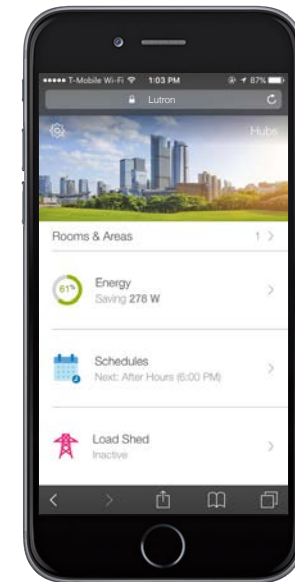
## Wireless controls & sensors



## Centralized control & integration



## Simple-to-use software



Lighting control web app

## AirLink Fixture Options



AirLink is a versatile & scalable system which provides many opportunities for new construction & retrofit projects. LSI offers AirLink-integrated fixtures for simple plug-and-play solutions & AirLink-compatible fixtures which come in a wider variety of designs & styles.

### AirLink-integrated Fixtures

These LED fixtures are factory-installed with AirLink wireless daylight harvesting & motion sensors. This assures complete lighting control while reducing installation time by up to 90%. More control, less time, less effort.



ASC - Recessed Direct/Indirect Troffer



LPASC - Low Profile Recessed Troffer



LPEC - Low Profile Recessed Troffer



SLI - Side Light Recessed Troffer



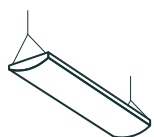
TRI - Architectural Luminaire



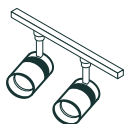


## AirLink-compatible Fixtures

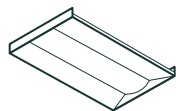
AirLink is compatible with most fixtures. LSI offers system-compatible LED fixtures in a variety of designs & styles. Achieve the same wireless lighting control flexibility while catering to your building's aesthetic.



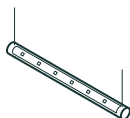
Linear fixtures



Track lighting



Ambient troffers



Accent/sign/wall wash lights



Downlights



AirLink can be integrated with your building system for full, seamless control.

The BACnet/IP protocol is the primary means of integration. BACnet is embedded or native in the wireless hub, which means no external interfaces or gateways are required in order to communicate with other systems.



**Building/Energy Management Systems (BMS/EMS)**



**HVAC**



**IT**



**Audio & Video**



**Energy Dashboards & Analytics Packages**



**Internet of Things**

BACnet® is a registered trademark of ASHRAE.



For more information on LSI's AirLink-compatible fixtures, visit:  
[www.lsi-industries.com/products/led-lighting-solutions](http://www.lsi-industries.com/products/led-lighting-solutions)



## Solutions for Every Space & Budget

The right control in the right space. The AirLink product family lets you personalize control for each space in your building without locking you into more or less control than you need.

**A**

### Scheduling

Common areas, hallways & stairwells can utilize scheduling & occupancy/vacancy sensing to keep areas well-lit during work hours & dimmed or off when the building is unoccupied.

**B**

### Daylight Harvesting

Rooms that receive natural light—such as private offices & lobbies—can utilize daylight harvesting to save energy by automatically dimming light levels during the day.

**C**

### Manual Dimming

Manual wireless dimming—via the AirLink wireless remote—makes altering light levels fast & easy. Utilize the favorite button to set specific light settings, such as a dimmed level for digital presentations in a conference room.

**D**

### Individual Fixture Dimming

Maximize energy savings & give each occupant in the work space personal dimming control to increase comfort & increase productivity.

**E**

### Simple Switching

Occupancy sensors control all lights together by switching them on & off in response to room occupancy, making it perfect for bathrooms, breakrooms & storage areas.



AirLink has the ability to switch plug loads on & off based on the occupancy status of a particular room. Conveniently save energy while meeting stringent energy codes, such as ASHRAE & Title 24.





AirLink's simplistic installation makes it perfect for retrofit applications. Power pack modules mount to a standard junction box in the ceiling to control a group of lights.

D



Wireless switch on pedestal



Wireless wall-mounted occupancy sensor

C

B

A

E

SMITH  
TECH  
INCORPORATED



The wireless hub allows you to wirelessly connect all of your AirLink devices & fixtures within 10,000ft<sup>2</sup>. Add multiple hubs to accommodate larger spaces, no problem!

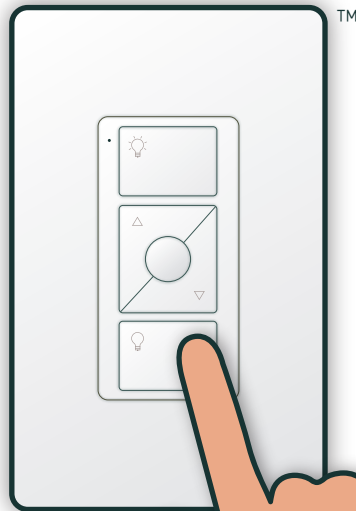
## Simple Wireless Commissioning

We made programming your connected fixtures & devices quick & painless. The web application makes the commissioning process visual, so you can easily tie fixtures to sensors, remotes & each other. This easy-to-use software cuts commissioning time down by 90% & the best part is—there is no additional technical knowledge required, so anyone can use it!

### Pairing a wireless device

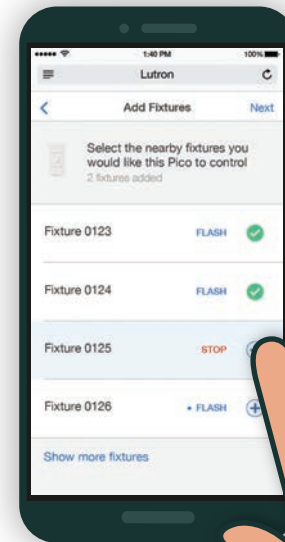
1

Press & hold on the wireless device



2

The web app then displays the fixtures & devices closest to the control for easy pairing





## Hub Web Application

Connect your computer or mobile device to the wireless hub WiFi, then using your browser, navigate to hub's homepage. The web application gives you complete control over your system & the ability to:

- Easily connect fixtures, controllers, sensors, remotes & switches
- Intuitively name fixtures & devices
- Group fixtures together and/or specify fixtures with individual control
- Switch and/or dim lights
- Save favorite light levels
- Setup occupancy/vacancy/daylight harvesting functions for groups or individual fixtures
- Set sensor sensitivity level
- Set high-end/low-end trim
- Establish light schedules
- Setup Demand Response
- Setup plug load control



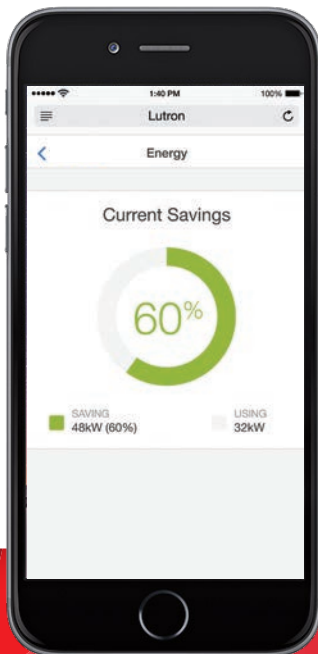
For systems without a wireless hub, fear not! Pairing AirLink components, such as wireless dimmers & sensors, is as easy as pressing & holding a button.

# Save Energy & Improve Building Performance



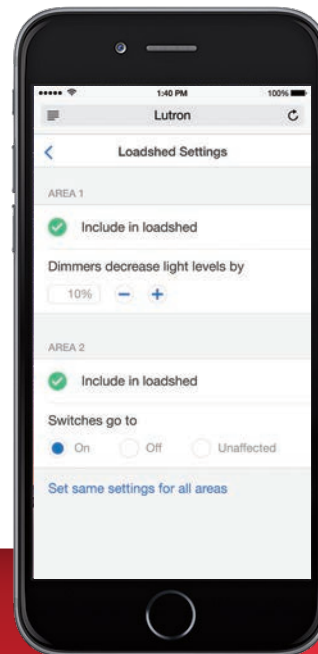
## Energy reporting

Quickly view & display energy usage information to drive decision making & demonstrate savings.



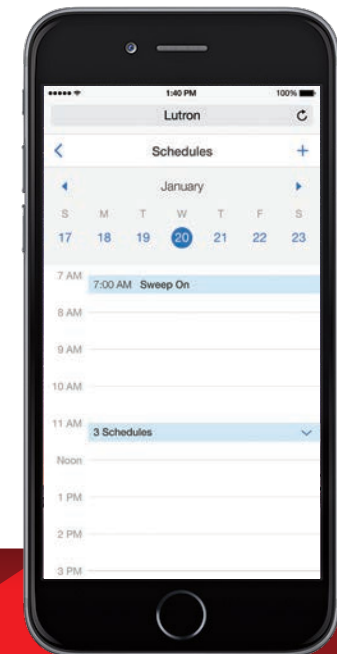
## Demand Response

Easily set lighting reduction levels that automatically respond during peak electricity usage times.



## Scheduling

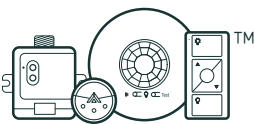
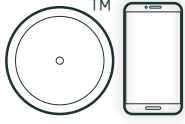
Use a weekly calendar to automatically adjust lights based on time of day.





## Meeting Energy Code Requirements

AirLink wireless solutions ensure you can meet new construction & retrofit (lighting alterations) code requirements for ASHRAE 2010, ASHRAE 2013, IECC 2012, IECC 2015 & Title 24-2016.

Control Method(s)	Code Requirements					Solution(s)	
	ASHRAE 90.1-2010	ASHRAE 90.1-2013	IECC 2012	IECC 2015	Title 24-2016	 AirLink	 AirLink with wireless hub
Local Switch	●	●	● ●	● ●	● ●	✓	✓
Occupancy Sensing	● ●	● ●	● ●	● ●	● ●	✓	✓
Bi-level Control	●	●	● ●	● ●	● ●	✓	✓
Multi-level dimming					● ●	✓	✓
Automatic Daylighting	●	●		● ●	● ●	✓	✓
Demand Response					● ●		✓
Energy Monitoring		●			●		✓

**Key:** ● New construction ● Lighting Alteration/Retrofit

**Disclaimer:** This table is a summary only; other exceptions or details may apply. Jurisdictions may have requirements that differ from these standards.

# Superior Sensing & Technology

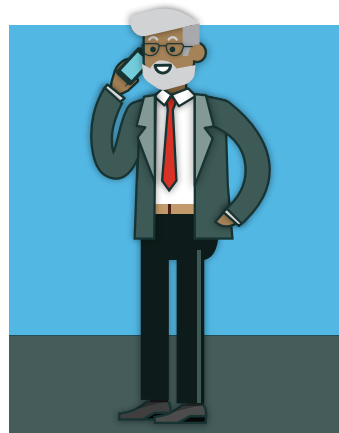
## XCT™ sensing technology

The AirLink system's occupancy sensors utilize Lutron's exclusive XCT™ technology which provide exceptional accuracy for fine, minor & major motion detection & eliminates false-offs/false-ons.



### Fine Motion

Small movements like flipping pages of a book or typing



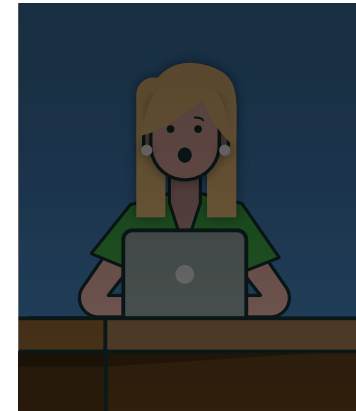
### Minor Motion

Movements like extending your arms



### Major Motion

Person walking 3 feet



### No false-off/false-on

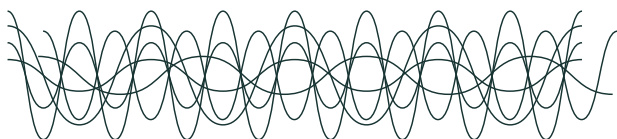
Lights stay on when room is occupied & off when unoccupied



## Clear Connect® Wireless Technology

All AirLink wireless products utilize Lutron's patented Clear Connect® wireless technology which operates in an uncongested radio frequency band. The result is ultra-reliable communication & smooth dimming performance with no flicker or delay. Other devices will not interfere with the Lutron lighting control system.

### “Other” frequency bands



**2.4 GHz:** Cordless phones | Bluetooth devices | Wireless security cameras | WiFi Routers

Other devices operate in congested frequency bands, creating high potential for wireless interference

### Clear Connect®



**434 MHz:** Lutron Clear Connect® wireless technology

AirLink devices operate in an uncongested frequency band, providing ultra-reliable operation

## Contact LSI

For any questions regarding the AirLink system or components please contact our sales or support representatives.



### Sales

[controls.sales@lsi-industries.com](mailto:controls.sales@lsi-industries.com)



### Support

[controls.support@lsi-industries.com](mailto:controls.support@lsi-industries.com)  
1 (800) 436-7800 (support, option 8)



### More information

For more information on AirLink, visit our website at [www.lsi-airlink.com](http://www.lsi-airlink.com)





**AirLink™**  
enabled by Lutron®

## **A scalable wireless lighting control system for new & existing commercial buildings**

- Up to 90% labor & risk reduction for total project
- Allow for individual control, custom scheduling, demand response, plug load control & sensing — all accessible by mobile device
- Save energy usage & costs while meeting energy codes
- Combine lighting control strategies to maximize efficiency
- Extend the life of luminaires & enhance quality
- Increase occupant & visitor safety
- Improve worker productivity & satisfaction



Lutron, Clear Connect and EcoSystem are trademarks of Lutron Electronics Co., Inc., registered in the U.S. and other countries, used under license. XCT is a trademark of Lutron Electronics Co., Inc., used under license. The designs of the Pico wireless remote control and theVive wireless hub shown in this document are trademarks of Lutron Electronics Co., Inc., used under license.

10000 Alliance Road  
Cincinnati, Ohio 45242  
Phone (513) 793-3200  
[www.lsi-industries.com](http://www.lsi-industries.com)

©2017 LSI Industries Inc.  
Printed in the U.S.A.