



Retail Petroleum Lighting



Canopy



Exterior



Interior

LIGHTING
+GRAPHICS
+TECHNOLOGY

IMAGE



Experience Makes the Difference

In 1976, LSI Industries forever changed the landscape of retail petroleum lighting. Smart and innovative lighting solutions by LSI became the new industry standard, delivering an unparalleled level of petroleum market knowledge and expertise. LSI has been able to help marketers optimize their lighting to enhance and improve overall brand presence, visibility and image, all in the name of increasing traffic and sales.

Through the years, LSI has pioneered the upgrade philosophy with a number of "firsts" including:

- Reduced installation cost through the use of one-person installation designs
- Reduced maintenance through the use of ground relamping techniques
- Applied retail lighting strategies to the canopy environment with LSI's LED technology
- Improved performance through our UPK kits
- Reduced energy with the Scottsdale® 320-watt pulse-start metal halide canopy lighting fixture
- Maximum visual impact through the use of vertical lamp position in a dropped lens configuration

Today, LSI continues its legacy of innovation and excellence, while pushing the LED technology envelope to greater and greater heights. As a vertically integrated manufacturer, we design and build our products around our value-driven design philosophy. Whether it's building a new site or retrofitting an existing location, LSI has the experience, products, design assistance and service capabilities to put your site in the best possible light.



LSI Corporate Headquarters and Assembly Facility in Blue Ash, Ohio.



★ The majority of LSI's products are assembled in USA facilities by an American Workforce utilizing both domestic and foreign components.

LIGHTING
+GRAPHICS
+TECHNOLOGY | **IMAGE**

LSI Retail Petroleum Lighting



LSI: Leadership, strength and a legacy of LED technological innovation.

No one knows petroleum lighting like LSI. We've lived it everyday, since 1976. In fact, we've helped define it with arguably the most innovative lighting and graphic solutions in the business. It is our passion for the industry and for creating highly-valued, customer-centric solutions that drives us toward continuous improvement.

Our innovative LED technology is as much an art form as it is an unbelievable achievement in luminaire engineering and design. Our LED fixtures are designed and built around a patented "intelligence platform" - SmartTec™ - to give you unmatched command over your lighting system and the most reliable, energy-efficient and affordable LED lighting solution possible.

We've been invested in LED for more than 25 years, and we're fully committed to taking it to the next level for you! The world of LED is rapidly changing, and we're at the forefront. Industry-wide LED lighting standards are constantly being redefined, so now more than ever, you need a lighting partner you can trust. That partner is LSI. We are leading the charge, and focusing on serving our customers with excellence and quality.





Canopy Lighting



Canopy Lighting Solutions

(CRU, CRUS)

When LSI released the Scottsdale® fixture, it set the standard in canopy lighting. LSI renews its commitment to canopy lighting, upon which its reputation was based, through continuous improvements and application of the latest LED technology to retrofits and new construction. We are redefining the industry standards that we set via our LED canopy lighting solutions. **Beyond brilliant. Beyond an encore. Trust our Legacy™!**

- Purpose Built
- Performance Driven
- Stunningly Attractive

The super-sleek, razor-thin LSI LED Legacy canopy fixture is designed to precisely replace the LSI Scottsdale canopy fixture quickly, easily and cost-effectively. Beyond mere beauty, the Legacy can also deliver the highest lumens per dollar and provide the greatest degree of flexibility to light your site. Day or night the Legacy is attractive in all aspects!

Legacy™ canopy installation is as easy as 1, 2, 3!



The Legacy is designed specifically to replace the Scottsdale - installing quickly into the existing 4" hole without cutting, drilling or caulking. It is simply the fastest, easiest installation in the marketplace.



Building upon the Legacy of the Scottsdale®. Advancing the LED revolution.

Refined. High performance. Unparalleled control.

Characteristics you will not find in any other LED canopy fixture. Designed to express and enhance your image. Increase customer traffic. Manage energy to reduce consumption and improve operating efficiency. LSI continues to lead the way in canopy lighting innovation unlike any other.

Purpose Built

- One-person installation - fastest, easiest in the marketplace
- High Performance, Low Cost - most cost-effective LED canopy fixture in the marketplace

Performance Driven

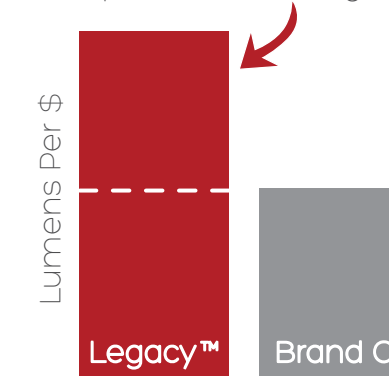
- Highest lumen per dollar - tremendous flexibility in how you light your site
- Choice of lumen packages - up to 21,900 lumens
- Better light distribution - more illumination on your dispensers
- Designed for utility and/or DLC approval and rebate participation

Stunningly Attractive - Day & Night

- Extremely slim optical unit - flush look against the canopy
- Full panel brilliance, properly scaled to your canopy



Up to 100% more light



Canopy Lighting Upgrade and Retrofit

Ask LSI about the benefit of financing lighting and equipment upgrades.

If you thought upgrading or retrofitting the Scottsdale® was quick and easy, you'll love our other LED luminaires!



Universal Superkit®



Recessed Superkit®

Whether you have a 2 x 2 box, recessed fixture or LSI Scottsdale, the Legacy Superkits allow you to upgrade or retrofit your site(s) in a matter of minutes. Upgrade your current canopy lighting today with the LSI Legacy Superkits.

- No modifications, including additional cutting or drilling, of the deck required
- No additional wire harness work necessary
- Quick connect wiring
- Quickest, cleanest installation possible

Legacy™ CRUK-UNV Superkit Installation



Focus Fixture

LSI's LED Focus fixture is designed to deliver precise beam placement for optimal illumination of vertical surfaces.



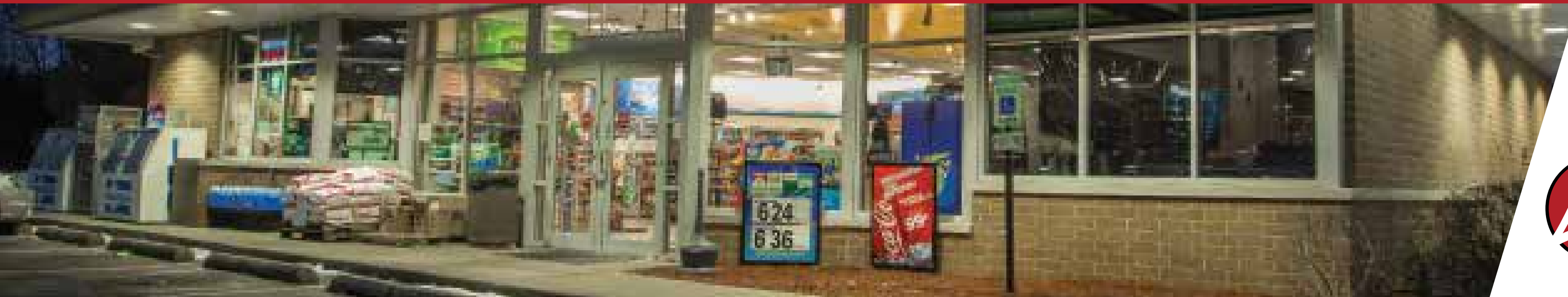
LED Focus

With its slim 2" profile and highly efficient optics, the LED Focus is an ideal complement for LSI LED ambient under canopy lighting.

- 30 high-brightness LEDs, 5300K, 70 CRI (nominal)
- Durable die-formed aluminum housing with independently adjustable extruded aluminum light cartridges. Each light cartridge has a glass lens to provide a water-tight seal.
- 3 banks (cartridges) of LEDs independently adjustable between +/-45% allowing targeted zone illumination – Regardless of light cartridge position luminaire provides cutoff
- Available for new construction and 2 x 2 or recessed retrofits



Exterior Lighting



LED Solutions for Parking Lot and Transitional Areas

With LSI, you have the convenience of choice and the ability to project the image that best represents your brand. From the progressive to the conservative, you set the aesthetic tone - we ensure the performance. Attractive. State-of-the-art. High performance. Energy-efficient.



Slice

Available in three sizes, with a choice of reflectors and drive currents, Slice LED area lights give you the market's best possible lumens per dollar

- Sleek, low profile - Optical assembly is less than 2" thick
 - 1-piece housing ensures the optical unit and internal components are protected from contaminants
 - Low profile fixture means very low EPAs allowing the use of lighter gauge poles
- High performance
 - XLCL - over 59,000 lumens
 - XLCM - over 31,100 lumens
 - XLCS - over 15,700 lumens
 - Up to 119 lumens per watt
- Types FT and 5 distribution
 - Types FT-L and FT-R available with XLCM
- 0-10 volt dimming option available with HO drive current



PLCS

The sleek, 1-piece housing ensures the optical unit and internal components are protected from any contaminants. Reduced energy, pole, installation and maintenance costs - all take a slice out of the costs that affect your bottom line.

- Best Possible Lumens Per Dollar
- Low Profile
 - PLCS - Less Than 2" Thick
- Two Sizes
 - SS - Over 16,600 Lumens
 - HO - Over 21,900 Lumens
- Up to 139 Lumens Per Watt
- Distribution - Symmetric
- 4000 or 5000K Cool White color temperature
- 0-10 Volt dimming energy saving is standard
- Mounting - available in 5 mounting options



XAMU/XASU

Available in two sizes, with a choice of drive currents and reflectors, the XAMU & XASU deliver bright, uniform lighting with reduced high-angle light for low glare and essentially no light trespass.

- Light-weight, low profile
 - 1-piece housing ensures optical unit and internal components are protected from contaminants
 - Aerodynamic design meets low pole EPA requirements
- High performance
 - Designed to IES Model Lighting Ordinance Standard (MLO)
 - Over 17,000 lumens
 - Up to 101 lumens per watt
- Types 3, FT and 5 distribution
- Energy savings control options available



XGBM

Sporting a conventional fixture design, the XGBM delivers bright uniform lighting with essentially no light trespass.

- Weather-tight die-formed housing
 - Tethered top-access housing for ease of installation
- High performance
 - Over 31,810 lumens
 - Up to 123 lumens per watt
- Types 3, 5, FT and FTA distribution
- Optional color decals

Not all variations are DLC approved.



Mirada™ XALM

The Mirada's sleek design makes it perfectly-suited for architectural applications, while its cost-effective die-cast aluminum housing makes its acquisition cost very competitive. The Mirada uses high performance silicone optics, casts 36,000+ lumens.

- Industry-leading photometry through LSI's exclusive new optical system
- Contemporary, sleek, low-profile styling
- Integral motion Sensor (IMS) Energy Saving Control Option Available



Mirada™ Round XMR

The Mirada™ Round's sleek, radiused design makes it perfectly suited for architectural applications while keeping a high lumen output. All Mirada Series fixtures feature special silicone optics that do not crack or yellow with age.

- Lumen packages range from 35,000+
- Industry leading photometry through LSI's exclusive new optical system
- Contemporary, sleek, low-profile styling
- Available with integral and wireless controls



LED Bollards

The XHYP3 architectural bollard features a high-performance, Dual Beam LED optical system for unsurpassed efficiency, control and protection.

- Motion sensors activate switching of fixture light levels
- Available with emergency back-up
- Choose 360 or 180 degree light distribution to best light your transitional areas
- Architectural SSL Magazine Product Innovation Award (PIA) Winner



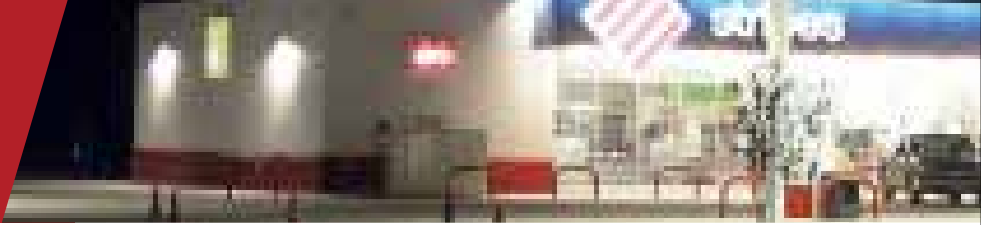
LED Inground

The XIG direct-burial LED fixture is designed for uplighting building architecture and landscape features at only 22 input watts.

- Optimized beam control distributes 90% of generated light into desired beam pattern
- Available with Spot, Narrow Flood and Flood reflector options
- Optics can be tilted +/- 15 degree via external aiming screws



Wall Mount and Building Mount Lighting Solutions



Complement your area and canopy lighting with LSI wall mount luminaires designed to deliver optimum illumination and an increased sense of safety and security.



Soffit

LSI offers a variety of LED solutions to light soffit areas for both new construction and retrofit projects. Depending upon your soffit ceiling structure and lighting requirements, you can get outstanding illumination while using considerably less energy than a standard HID fixture.



Wall Pack

Choose from a number of LED wall pack fixtures that deliver exceptional uniformity with full cutoff to create a brighter environment at lower light levels for entrance, egress and security lighting requirements. Choose from architectural designs to value specifications to meet your requirements.



Linear Wall Wash & Fascia

The Linear Wall Wash (LWW) and Fascia (LWF) products are designed for seamless continuous row mounting. Brilliant high lumen LEDs produce about 250 lumens at 5.5 watts per foot. The LWW is a highly dramatic and efficient means of interior or exterior wall illumination. The LWF delivers vivid face lighting from above the top of the fascia.



Surface Mount

The Legacy Surface Mount gives you the same performance and energy savings as the Legacy canopy fixtures. Designed for applications where mounting and servicing requirements demand access from below the fixture, it is offered in two sizes with up to 21,900 lumens. The CRU & CRUS are ideal for illuminating open spaces with mounting heights of 12' or greater.





Interior Lighting



Interior Ambient Lighting Solutions



Creating an enticing, comfortable environment for your customers helps to invite them into the store, improve their shopping experience and keeps them coming back.



LPASC

The LPASCs low profile design makes it ideal for shallow plenum applications. Best in class configurable lumen packages and efficiencies that target DLC Standard/Premium. Available in 1x4, 2x2, and 2x4.

- Available in 5000K, 4000K, 3500K and 3000K color temperatures
- Below plenum room side access to optical chamber and driver compartment via pressure removable radius lens and side panel.
- Optional 120v-277v integral emergency battery pack is available
- Lumen packages ranging from 2000-9000 lumens
- Efficacy up to 140 LPW
- 0-10V dimming (dims down to 1%)
- Integrated control options available **AirLink™**



Triumph™

The LED Triumph is a specification grade recessed troffer that delivers even illumination and provides maximum visual comfort. The clean lines offer a unique design that is perfect for any setting.

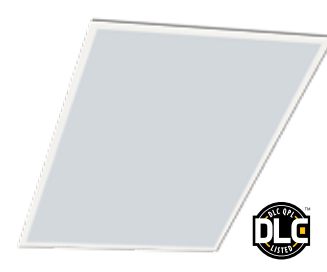
- Available in 2' x 2' and 2' x 4' sizes
- Multiple lumen outputs - 2,300 - 9,300 lumens
- Up to 110 lumens per watt
- 0-10V Dimming Driver Standard (1% - 100%)
- High Transmission Opal Lens Eliminates Bright Spots and Provides High Vertical Illumination and Visual Comfort.
- Available with AirLink™ wireless controls **AirLink™**



LPEC

The LPEC's low profile design makes it ideal for shallow plenum applications. Best in class configurable lumen packages and efficiencies that target DLC Standard/Premium. Available in 1x4, 2x2, and 2x4.

- Available in 5000K, 4000K, 3500K and 3000K color temperatures
- Below plenum room side access to optical chamber and driver compartment via pressure removable radius lens and side panel
- Optional 120v-277v integral emergency battery pack is available
- Lumen packages ranging from 2000-9000 lumens
- Efficacy up to 144 LPW
- 0-10V dimming (dims down to 1%)
- Integrated control options available **AirLink™**



SFP

The LED SFP is a lay-in edge-lit flat panel light that provides balanced illumination from the sides of the fixture with no visible light source.

- Lumen packages range from 4,000 to 5,000
- 3500K, 4000K or 5000K color temperatures available
- Available in 1' x 4', 2' x 2' and 2' x 4' sizes
- 0-10V dimming is standard (10% - 100%)
- Aircraft cable mounting optional
- Utilizes edge-lit technology, provides full diffusion with excellent uniformity.



Wall Wash & Accent Solutions

Optimize your interior space by complementing your ambient lighting with the appropriate wall wash or accent lighting. Whether you are lighting graphics or washing vertical surfaces with light, LSI has a variety of fixtures for these applications. Choose from a wide array of mounting options, light output and aiming abilities for the look you want.



SLI

The SLI is an indirect fixture featuring a unique side-lit design which provides balanced illumination and high angle light.

- Available in 2x2 and 2x4 sizes
- Choice of 12 lumen outputs - to 6012
- Up to 108 lumens per watt (2 x 4)
- Open cavity / no lens to trap dirt or insects
- Available with AirLink™ wireless controls **AirLink™**



GA

The LED GA is a high efficiency, high performance troffer. Its low profile housing (3 1/4" deep) makes it ideal for tight plenums.

- Available in 2' x 4', 2' x 2' and 1' x 4' sizes
- Choice of lumen outputs - up to 9474
- Up to 117 lumens per watt (2 x 4)
- Full prismatic P12 lens
- Available in Cool White (5000K), Neutral White (4000K) and Warm White (3500K)



DW

The DW is a small-sized dome wrap - surface/pendant mount with a rounded lens for unique appearance, and with a flexible lens that allows for easy access to install and service in small spaces.

- Available in 4' and 8'
- Ballast cover held in place with quarter turn fasteners for easy access.
- Available in Cool White (5000K), Neutral White (4000K) and Warm White (3500K)



CIRUS

The CIRUS LED retail lighting fixture created for higher ceiling applications of 16 feet or more, and 2 x 2 recessed ceilings.

- Available with both clear and diffused flat tempered glass lens
- Choice of lumen packages - up to 21,900 lumens
- Installs quickly into grid, drywall or plaster ceilings
- 5000K or 4000K color temperatures available



AUL/AUM

Aureus (AUM/AUL) LED High Bay / Low Bay fixtures. Excellent ambient lighting with a symmetrical distribution that delivers horizontal & vertical uniformity, glare control, and visual comfort. Designed as a direct replacement for 250W-400W HID fixtures.

- Choice of Lumens - Up to 23,923
- Multiple mounting options and housing finish colors
- Recommended uses include commercial, retail, restaurant, and convenience store applications
- cULus, ARRA Funding Compliant, and RoHS
- Dimming option available



Downlights

LSI's Origin™ brand Downlights for commercial and architectural applications are energy-saving solutions with great color rendering. Perfect for retail. LSI's small aperture lighting fixture choices focus attention on your products, rather than on the fixture.



EG3

With its vaportight design and reinforced fiberglass housing, the LED EG3 fixture is ideal for utility, backroom and cooler applications. The proprietary high-impact acrylic lens provides high lumen output with soft, reduced brightness.

- 4' and 8'
- Choice of lumens - up to 7146 lumens
- Certified NSF (ANSI Standard 2), IP65, IP66, IP67, NEMA 4X, High Pressure Hose Down (1500 PSI)



Decorative Indoor

Distinctively styled, LSI offers decorative LED fixtures to complement traditional and progressive design schemes. Featuring high performance LED optics housed in traditional and contemporary housings, you have a number of choices for your lighting requirements.

- A variety of styles, finished and mounting options
- Excellent performance

Using LSI Control Solutions, you will save on energy costs by using only the light you want when and where you need it. You have the ability to dim your lighting and customize your settings so your lights can be set to noticeably jump to 100% when someone enters your lot after hours. The LSI Controls division can also help customers develop custom tools to meet specific requirements.

In addition to exterior lighting controls, LSI offers interior controls that provide energy saving by switching lights off or dimming them during non-operating hours.

LSI Control Solutions Provide:

- Reduced energy
- Right light at the right time
- Green messaging
- Increased security



Wireless Controls

- Applications: Parking lot, canopy, signage, service bays, showrooms
- Switching and dimming of virtually any exterior or interior fixture
- Switch or dim according to schedule, motion or ambient light conditions
- Comprehensive reporting and status alerts
- Factory installed controllers in many LSI fixtures



Commercial Lighting Control Panels

- Applications: Large open areas, hallways, showroom, exterior signage and site lighting
- Up to 24 branch circuits
- Switch inputs from low voltage switches, sensors, and photocells
- Built-in Holiday Schedules
- Astronomical Clock



Title 24/ASHRAE 90.1-2013 Controls

- Applications: Offices, restrooms, break rooms, conference rooms, storage rooms, hallways
- Passive Infrared, Ultrasonic, and Multi-Tech
- Multiple Coverage Options up to 2,000 sq. ft.
- Occupancy or Vacancy Options

AirLink™ Controlled Lighting

LSI AirLink™ is a new family of controlled LED luminaires featuring integrated Lutron® Clear Connect™ Wireless Technology for new construction and retrofit applications, including use in a variety of buildings and infrastructures.

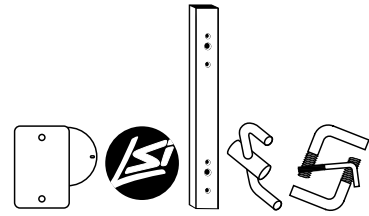
Integrated motion and light level sensors ensure maximum energy savings, quality and comfort, while wireless controls enable occupants to easily operate Individual or groups of fixtures. AirLink™ boasts easy and fast installation, quick setup and can be used to meet stringent energy code requirements and support LEED certification.



LSI Poles & Brackets

LSI Poles can be drilled for nearly any fixture (not only LSI fixtures). Of course, when you order your entire lighting system from LSI, we guarantee a precise color match between fixture, pole and brackets.

Our poles and brackets are painted using the finishing process called the DuraGrip® System. DuraGrip provides outstanding durability and resistance to scratching. It is the advanced finish that stands up to the severest conditions and offers a wide range of colors for adaptability into any application.



LSI Poles and Brackets



Exit Emergency / Life Safety Lighting

LSI offers a wide range of LED Life Safety egress fixtures designed to meet facility safety codes. Life Safety fixtures are cost-effective to install, tested and engineered for maximum reliability when you need it most.



LSI Graphics and Digital Technology Solutions

LSI is an experienced leader in visual image solutions providing custom graphics, décor, displays, digital technologies and implementation services for complete image programs that fit and enhance the unique environments of our customers.

Create a remarkable automotive showroom experience with LSI's integrated digital signage systems, which offer opportunities for entertainment and information sharing as well as data collection and event triggers that can serve as integral tools in the engagement and pursuit of car buyers, including:

- Advanced display, messaging and interactive technology
- Mobile device integration
- Smartvision® LED indoor/outdoor video displays



LSI Graphic Solutions integrates lighting, graphics and technology to engage, guide and connect. Ask your LSI representative about new, custom architectural fixtures and fixtures with integrated signage & graphics.



Leadership, Strength and Innovation have shaped LSI's corporate culture for over 40 years. LSI is dedicated to enhancing the images of its customers through a unique, combined ability to provide them world-class lighting, graphic and technology solutions. LSI's SmartVision® for the future also includes application of smart lighting technology for interiors and exteriors. Why wait? Start harnessing the power of LSI's advanced capabilities today!



www.lsi-industries.com

10000 Alliance Road
Cincinnati, Ohio 45242

Phone 513.793.3200
Fax 866.316.7126



©2017 LSI Industries Inc.
Printed in U.S.A.